

FELLING TRAILERS

SEMI TRAILER LINES

MX, OTR, HX, NN & NN-TT



FT-80-3 MX
w/Opt. Aluminum Toolbox



FT-70-2 OTR
w/Opt. Viper Red Paint



FT-70-2 HX



The **FELLING** Style
Quality ~ Craftsmanship ~ Pride



RN-102

Since 1974



MX SERIES

MX-L (Low) & MX-H (High)

This model line is ideal for carrying the heavy loads from the shop to the construction site. Each trailer is configured to meet your hauling needs. With a large array of options available, there is no doubt that **WE BUILD IT YOUR WAY.**



FT-70-2 MX-L - 44' Overall
Shown with Std. 90° Neck, 5' Beavertail, 5' Ramps, Optional Stake & Strap with Center Spools



FT-80-3 MX-L - 47' Overall
Shown with Optional 20° Paver Neck (9' + 6' Slope), 6' Wood Inlaid Beavertail with Hydraulic Bi-fold Ramps (42" x 11') Wood Inlaid

OPTIONS



Double Drop Deck



Custom Beavertail



Floor Plate Over Wheels with Traction Bars, Aluminum Wheels and Lift Axle



Wood Inlaid Beavertail and Ramps, Apitong/Angliem Pedra Decking

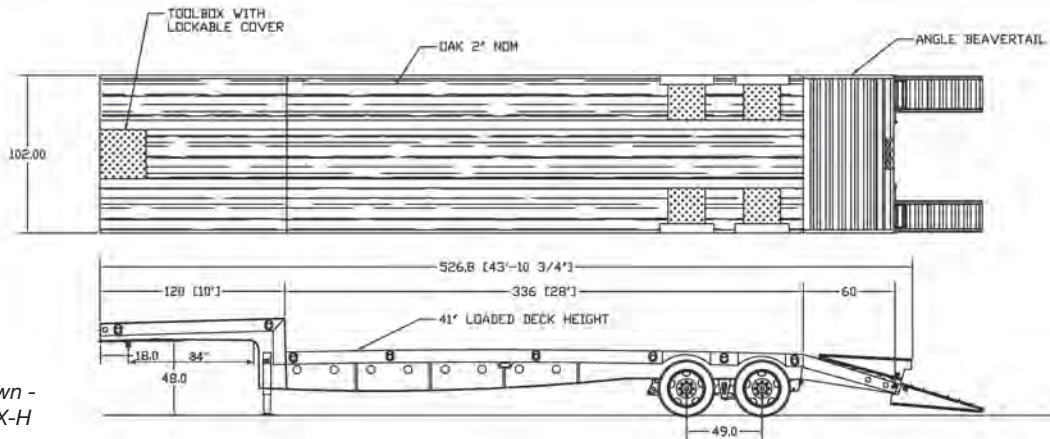


Center Lift Beavertail and Ramps with Tread Plate Backers



Flip Over Beavertail with Tailboard Roller

MX SPECIFICATIONS



Model Shown -
FT-70-2 MX-H

STANDARD FEATURES:

- 5' Self Cleaning Angle Iron Beavertail
- 5' x 20" Self Cleaning Angle Iron Spring Assist Ramps
- Toolbox with Cover Recessed In Upper Deck
- 48" King Pin Height
- 8" Structural Channel Side Rails
- Pierced 6" I-Beam Crossmembers on 16" Centers
- Tread Plate Covered Wheels
- Heavy, Robust Design

Model	FT-70-2 MX L/H	FT-80-2 MX L/H	FT-80-3 MX L/H	FT-100-3 MX L/H
GVWR	82,500 lbs. (37,421 kg.)	82,500 lbs. (37,421 kg.)	97,000 lbs. (43,998 kg.)	118,000 lbs. (53,523 kg.)
Approx. Weight (Empty)	12,500 lbs. (5,669 kg.)	12,500 lbs. (5,669 kg.)	17,000 lbs. (7,711 kg.)	18,000 lbs. (8,164 kg.)
Load Capacity (Dist.)	70,000 lbs. (31,751 kg.)	80,000 lbs. (36,287 kg.)	80,000 lbs. (36,287 kg.)	100,000 lbs. (45,359 kg.)
Net Frame Cap. 16'	52,500 lbs. (23,813 kg.)	60,000 lbs. (27,215 kg.)	60,000 lbs. (27,215 kg.)	75,000 lbs. (34,019 kg.)
Deck Height (Loaded)	L - 35" (88.9 cm.), H - 41" (104 cm.)	L - 35" (88.9 cm.), H - 41" (104 cm.)	L - 35" (88.9 cm.), H - 41" (104 cm.)	L - 35" (88.9 cm.), H - 41" (104 cm.)
Deck Length (Main Deck)	28' (8.53 m.) 38' Overall (11.58 m.)	28' (8.53 m.) 38' Overall (11.58 m.)	28' (8.53 m.) 38' Overall (11.58 m.)	28' (8.53 m.) 38' Overall (11.58 m.)
Deck Width	102" (2.59 m.)	102" (2.59 m.)	102" (2.59 m.)	102" (2.59 m.)
Deck Material	2" White Oak Nominal	2" White Oak Nominal	2" White Oak Nominal	2" White Oak Nominal
Upper Deck	90° 10' Deck (3.04 m.)	90° 10' Deck (3.04 m.)	90° 10' Deck (3.04 m.)	90° 10' Deck (3.04 m.)
King Pin Setback/Height	18" (45.72 cm.) 48" (121 cm.)	18" (45.72 cm.) 48" (121 cm.)	18" (45.72 cm.) 48" (121 cm.)	18" (45.72 cm.) 48" (121 cm.)
Swing Clearance	84" (213 cm.)	84" (213 cm.)	84" (213 cm.)	84" (213 cm.)
Main Frame	Engineered, Cambered, Fabricated Main Beams	Engineered, Cambered, Fabricated Main Beams	Engineered, Cambered, Fabricated Main Beams	Engineered, Cambered, Fabricated Main Beams
Crossmembers	Pierced 6" Jr. I-Beam on 16" Centers	Pierced 6" Jr. I-Beam on 16" Centers	Pierced 6" Jr. I-Beam on 16" Centers	Pierced 6" Jr. I-Beam on 16" Centers
Jack	200,000 lb. Twin 2 - Speed Holland Mark V	200,000 lb. Twin 2 - Speed Holland Mark V	200,000 lb. Twin 2 - Speed Holland Mark V	200,000 lb. Twin 2 - Speed Holland Mark V
Tie Downs	(16) Bent D-Rings	(16) Bent D-Rings	(16) Bent D-Rings	(16) Bent D-Rings
Axle Capacity	(2) 25K Meritor Oil Bath	(2) 25K Meritor Oil Bath	(3) 25K Meritor Oil Bath	(3) 25K Meritor Oil Bath
Suspension	49" Spread, 9700 Hutch (Spring)	49" Spread, 9700 Hutch (Spring)	49" Spread, 9700 Hutch (Spring)	49" Spread, 9700 Hutch (Spring)
Brakes	Air, ABS 2S/1M	Air, ABS 2S/1M	Air, ABS 2S/1M	Air, ABS 2S/1M
Tires/Wheels	L - (8) 235/75R 17.5 H, 8 Bolt Hub Pilot H - (8) 255/70R 22.5 H, 10 Bolt Hub Pilot	L - (8) 235/75R 17.5 H, 8 Bolt Hub Pilot H - (8) 255/70R 22.5 H, 10 Bolt Hub Pilot	L - (12) 235/75R 17.5 H, 8 Bolt Hub Pilot H - (8) 255/70R 22.5 H, 10 Bolt Hub Pilot	L - (12) 235/75R 17.5 H, 8 Bolt Hub Pilot H - (8) 255/70R 22.5 H, 10 Bolt Hub Pilot
Electrical DOT/SAE Approved	LED Sealed Beam Lights, Sealed Wiring Harness, Mid Turn Lights	LED Sealed Beam Lights, Sealed Wiring Harness, Mid Turn Lights	LED Sealed Beam Lights, Sealed Wiring Harness, Mid Turn Lights	LED Sealed Beam Lights, Sealed Wiring Harness, Mid Turn Lights
Paint - 3 Year Warranty	Completed trailer is fully grit-blasted for superior paint adhesion, primed with 2-coats of a rust prohibitive primer, and then painted with 3-coats of high gloss urethane topcoat, electrostatically applied.			

Measurements are approximate • Some models may be shown with optional equipment • All specifications are subject to change.

OTR SERIES

OTR-L (Low) & OTR-H (High)

This model line is ready for the long haul; a universal cargo/equipment carrier, ready for the highway. Each trailer is configured to meet your hauling needs. With a large array of options available, there is no doubt that **WE BUILD IT YOUR WAY.**

FT-70-2 OTR-L - 42' Overall

Shown with Std. 90° Neck, Optional 5' Beavertail, Air Ramps, D-rings, Viper Red Paint



FT-80-2 OTR-H - 48' Overall

Shown with Std. 90° Neck, 10' Platform, 255/70R22.5 Tires, Optional 10' 2" Axle Spread & Aluminum Toolbox

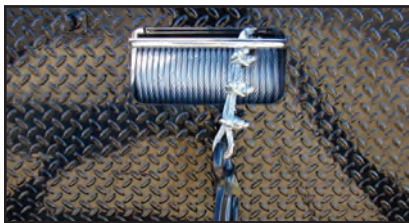


FT-80-3 OTR-L - 53' Overall

Shown with Optional Double Incline Apitong Wood Inlaid Beavertail, Aluminum Wood Inlaid Ramps with Storage Under Neck, Aluminum Toolbox, Apitong Wood Inlaid Split Full Width Air Ramps



FEATURES & OPTIONS



Winch Set in Custom Enclosure in Neck of Semi



(2) Two Aluminum Ramps with Storage Under Deck



(2) Two Aluminum Ramps with Storage Under Top Deck



Weather Proof Box for Air Controls and Pressure Gauge

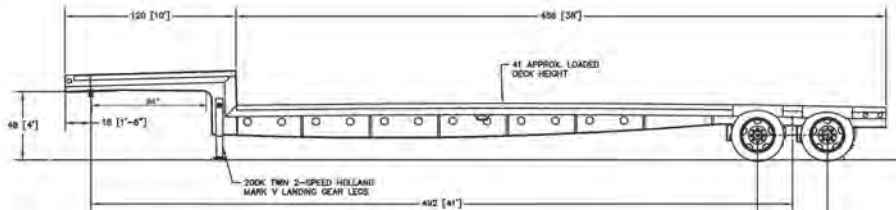
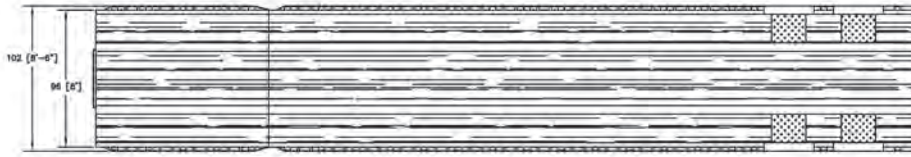


Custom Pullout Side Step with Mesh Traction Aid



Amber LED Strobe Lights, Switched and Mounted in Tailboard

OTR SPECIFICATIONS



Model Shown -
FT-70-2 OTR-H

STANDARD FEATURES:

- 48" King Pin Height
- 6" Structural Channel Side Rails
- Pierced 4" I-Beam Crossmembers on 12" Centers
- Tread Plate Covered Wheels
- Ridewell 240 Series Suspension
- Lightweight, Streamlined Design

Model	FT-70-2 OTR L/H	FT-80-2 OTR L/H	FT-80-3 OTR L/H	FT-100-3 OTR L/H
GVWR	82,500 lbs. (37,421 kg.)	92,500 lbs. (41,957 kg.)	97,000 lbs. (43,998 kg.)	118,000 lbs. (53,523 kg.)
Approx. Weight (Empty)	12,500 lbs. (5,669 kg.)	12,500 lbs. (5,669 kg.)	17,000 lbs. (7,711 kg.)	18,000 lbs. (8,164 kg.)
Load Capacity (Dist.)	70,000 lbs. (31,751 kg.)	80,000 lbs. (36,287 kg.)	80,000 lbs. (36,287 kg.)	100,000 lbs. (45,359 kg.)
Net Frame Cap. 10'	45,000 lbs. (20,411 kg.)	52,000 lbs. (23,586 kg.)	52,000 lbs. (23,586 kg.)	65,000 lbs. (29,483 kg.)
Deck Height (Loaded)	L - 35" (88.9 cm.) H - 41" (104 cm.)	L - 35" (88.9 cm.) H - 41" (104 cm.)	L - 35" (88.9 cm.) H - 41" (104 cm.)	L - 35" (88.9 cm.) H - 41" (104 cm.)
Deck Length (Main Deck)	38' (11.58 m.) 48' Overall (14.63 m.)	38' (11.58 m.) 48' Overall (14.63 m.)	38' (11.58 m.) 48' Overall (14.63 m.)	38' (11.58 m.) 48' Overall (14.63 m.)
Deck Width	102" (2.59 m.)	102" (2.59 m.)	102" (2.59 m.)	102" (2.59 m.)
Deck Material	1-3/8" Angelim Pedra/Apitong	1-3/8" Angelim Pedra/Apitong	1-3/8" Angelim Pedra/Apitong	1-3/8" Angelim Pedra/Apitong
Upper Deck	90° 10' Deck (3.04 m.)	90° 10' Deck (3.04 m.)	90° 10' Deck (3.04 m.)	90° 10' Deck (3.04 m.)
King Pin Setback/Height	18" (45.72 cm.) 48" (121 cm.)	18" (45.72 cm.) 48" (121 cm.)	18" (45.72 cm.) 48" (121 cm.)	18" (45.72 cm.) 48" (121 cm.)
Swing Clearance	84" (213 cm.)	84" (213 cm.)	84" (213 cm.)	84" (213 cm.)
Main Frame	Engineered, Cambered, Fabricated Main Beams	Engineered, Cambered, Fabricated Main Beams	Engineered, Cambered, Fabricated Main Beams	Engineered, Cambered, Fabricated Main Beams
Crossmembers	Pierced 4" Jr. I-Beam on 12" Centers	Pierced 4" Jr. I-Beam on 12" Centers	Pierced 4" Jr. I-Beam on 12" Centers	Pierced 4" Jr. I-Beam on 12" Centers
Jack	200,000 lb. Twin 2 - Speed Holland Mark V	200,000 lb. Twin 2 - Speed Holland Mark V	200,000 lb. Twin 2 - Speed Holland Mark V	200,000 lb. Twin 2 - Speed Holland Mark V
Tie Downs	Rub Rail & Stake Pockets with Double Pipe Spools	Rub Rail & Stake Pockets with Double Pipe Spools	Rub Rail & Stake Pockets with Double Pipe Spools	Rub Rail & Stake Pockets with Double Pipe Spools
Axle Capacity	(2) 25K Meritor Oil Bath	(2) 25K Meritor Oil Bath	(3) 25K Meritor Oil Bath	(3) 25K Meritor Oil Bath
Suspension	49" Spread Air Ride, Ridewell 240 with Manual Dump Valve	49" Spread Air Ride, Ridewell 240 with Manual Dump Valve	49" Spread Air Ride, Ridewell 240 with Manual Dump Valve	49" Spread Air Ride, Ridewell 240 with Manual Dump Valve
Brakes	Air, ABS 2S/1M	Air, ABS 2S/1M	Air, ABS 2S/1M	Air, ABS 2S/1M
Tires/Wheels	L - (8) 235/75R 17.5 H, 8 Bolt Hub Pilot H - (8) 255/70R 22.5 H, 10 Bolt Hub Pilot	L - (8) 235/75R 17.5 H, 8 Bolt Hub Pilot H - (8) 255/70R 22.5 H, 10 Bolt Hub Pilot	L - (12) 235/75R 17.5 H, 8 Bolt Hub Pilot H - (8) 255/70R 22.5 H, 10 Bolt Hub Pilot	L - (12) 235/75R 17.5 H, 8 Bolt Hub Pilot H - (8) 255/70R 22.5 H, 10 Bolt Hub Pilot
Electrical DOT/SAE Approved	LED Sealed Beam Lights, Sealed Wiring Harness, Mid Turn Lights	LED Sealed Beam Lights, Sealed Wiring Harness, Mid Turn Lights	LED Sealed Beam Lights, Sealed Wiring Harness, Mid Turn Lights	LED Sealed Beam Lights, Sealed Wiring Harness, Mid Turn Lights
Paint - 3 Year Warranty	Completed trailer is fully grit-blasted for superior paint adhesion, primed with 2-coats of a rust prohibitive primer, and then painted with 3-coats of high gloss urethane topcoat, electrostatically applied.			

Measurements are approximate • Some models may be shown with optional equipment • All specifications are subject to change.

HX SERIES

Model Shown - FT-70-2 HX

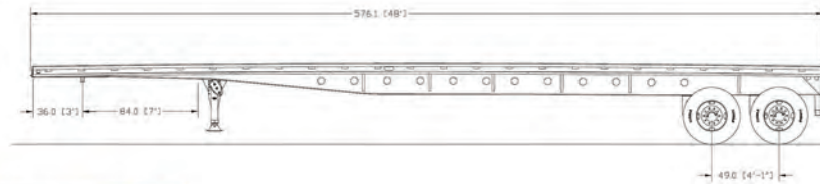
STANDARD FEATURES:

- 84" Swing Clearance
- 48" King Pin Height
- 30" King Pin Setback
- 6" Structural Channel Side Rails
- 4" I-Beam Crossmembers on 12" Centers
- Ridewell 240 Series Suspension

High Flat (HX)

This model line starts as a basic level floor flat trailer, with the large array of options available, can be configured to meet your hauling needs.

WE BUILD IT YOUR WAY.



FT-80-3 HX 37' Shown with Opt. 48" Bulkhead with Mesh Window, Mounting Brackets & Pockets for Pony Forklift, 3 Bar Winches with C-Hooks and Custom Yellow Paint with Red Stripes

Model	FT-70-2 HX	FT-80-2 HX	FT-80-3 HX	FT-100-3 HX
GVWR	82,500 lbs. (37,421 kg.)	92,500 lbs. (41,957 kg.)	97,000 lbs. (43,998 kg.)	117,000 lbs. (53,070 kg.)
Approx. Weight (Empty)	12,500 lbs. (5,669 kg.)	12,800 lbs. (5,805 kg.)	17,000 lbs. (7,711 kg.)	17,000 lbs. (7,711 kg.)
Load Capacity (Dist.)	70,000 lbs. (31,751 kg.)	80,000 lbs. (36,287 kg.)	80,000 lbs. (36,287 kg.)	100,000 lbs. (45,359 kg.)
Net Frame Cap. 16'	52,000 lbs. (23,586 kg.)	60,000 lbs. (27,215 kg.)	60,000 lbs. (27,215 kg.)	75,000 lbs. (34,019 kg.)
Deck Height (Loaded)	58" (147.3 cm.)	58" (147.3 cm.)	58" (147.3 cm.)	58" (147.3 cm.)
Deck Length	48' (14.63 m.)	48' (14.63 m.)	48' (14.63 m.)	48' (14.63 m.)
Deck Width	102" (2.59 m.)	102" (2.59 m.)	102" (2.59 m.)	102" (2.59 m.)
Deck Material	1-3/8" Angelim Pedra/Apitong	1-3/8" Angelim Pedra/Apitong	1-3/8" Angelim Pedra/Apitong	1-3/8" Angelim Pedra/Apitong
King Pin Setback/Height	30" (76.2 cm.) 48" (121 cm.)	30" (76.2 cm.) 48" (121 cm.)	30" (76.2 cm.) 48" (121 cm.)	30" (76.2 cm.) 48" (121 cm.)
Main Frame	Engineered, Cambered, Fabricated Main Beams	Engineered, Cambered, Fabricated Main Beams	Engineered, Cambered, Fabricated Main Beams	Engineered, Cambered, Fabricated Main Beams
Crossmembers	4" Jr. I-Beam on 12" Centers	4" Jr. I-Beam on 12" Centers	4" Jr. I-Beam on 12" Centers	4" Jr. I-Beam on 12" Centers
Jack	200,000 lb. Twin 2 - Speed Holland Mark V	200,000 lb. Twin 2 - Speed Holland Mark V	200,000 lb. Twin 2 - Speed Holland Mark V	200,000 lb. Twin 2 - Speed Holland Mark V
Tie Downs	Rub Rail & Stake Pockets with Double Pipe Spools	Rub Rail & Stake Pockets with Double Pipe Spools	Rub Rail & Stake Pockets with Double Pipe Spools	Rub Rail & Stake Pockets with Double Pipe Spools
Axle Capacity	(2) 25K Meritor Oil Bath	(2) 25K Meritor Oil Bath	(3) 25K Meritor Oil Bath	(3) 25K Meritor Oil Bath
Suspension	49" Spread Air Ride w/Dump Valve, Ridewell 240 Series Suspension	49" Spread Air Ride w/Dump Valve, Ridewell 240 Series Suspension	49" Spread Air Ride w/Dump Valve, Ridewell 240 Series Suspension	49" Spread Air Ride w/Dump Valve, Ridewell 240 Series Suspension
Brakes	Air, ABS 2S/1M	Air, ABS 2S/1M	Air, ABS 2S/1M	Air, ABS 2S/1M
Tires/Wheels	(8) 11R/22.5 H, 10 Bolt Hub Pilot	(8) 11R/22.5 H, 10 Bolt Hub Pilot	(12) 11R/22.5 H, 10 Bolt Hub Pilot	(12) 11R/22.5 H, 10 Bolt Hub Pilot
Electrical DOT/SAE Approved	LED Sealed Beam Lights, Sealed Wiring Harness, Mid Turn Lights	LED Sealed Beam Lights, Sealed Wiring Harness, Mid Turn Lights	LED Sealed Beam Lights, Sealed Wiring Harness, Mid Turn Lights	LED Sealed Beam Lights, Sealed Wiring Harness, Mid Turn Lights
Paint - 3 Year Warranty	Completed trailer is fully grit-blasted for superior paint adhesion, primed with 2-coats of a rust prohibitive primer, and then painted with 3-coats of high gloss urethane topcoat, electrostatically applied.			

Measurements are approximate • Some models may be shown with optional equipment • All specifications are subject to change.



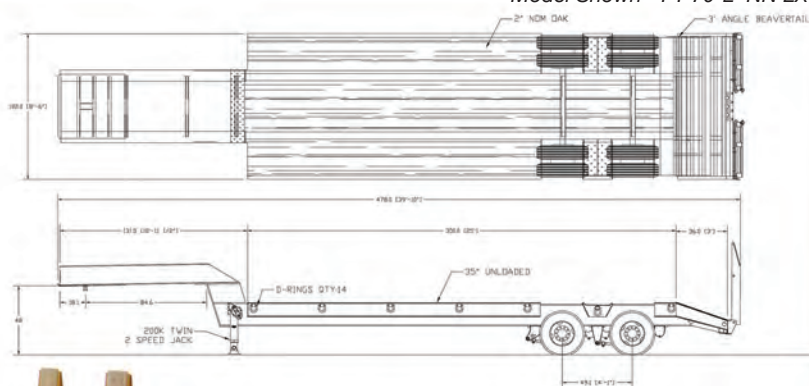
NN SERIES

Narrow Neck (NN)

This model line is the economical answer to your hauling needs. This classic style trailer fits the bill.

WE BUILD IT YOUR WAY.

Model Shown - FT-70-2 NN LX



FT-70-2 NN-LX - 39' Overall

Shown w/ Opt. Swivel D-Rings, Wood Inlaid Beavertail & Ramps, Const. Yellow Paint, Spare Wheel & Tire Mounted



FT-70-2 NN-HX - 40' Overall

Shown with Optional Motor Grader Ramps

Model	FT-70-2 NN	FT-80-3 NN	FT-100-3 NN
GVWR	84,000 lbs. (38,101 kg.)	97,000 lbs. (43,998 kg.)	118,000 lbs. (53,523 kg.)
Approx. Weight (Empty)	14,000 lbs. (6,350 kg.)	17,000 lbs. (7,711 kg.)	18,000 lbs. (8,164 kg.)
Load Capacity (Dist.)	70,000 lbs. (31,751 kg.)	80,000 lbs. (36,287 kg.)	100,000 lbs. (45,359 kg.)
Net Frame Cap. 16'	52,000 lbs. (23,586 kg.)	60,000 lbs. (27,215 kg.)	75,000 lbs. (34,019 kg.)
Deck Height (Loaded)	L - 35" (88.9 cm.) / H - 38" (96.52 cm.)	L - 35" (88.9 cm.) / H - 38" (96.52 cm.)	L - 35" (88.9 cm.) / H - 38" (96.52 cm.)
Deck Length	33' + 3' Beavertail (10.97 m.)	38' + 3' Beavertail (12.49 m.)	38' + 3' Beavertail (12.49 m.)
Deck Width	102" (2.59 m.)	102" (2.59 m.)	102" (2.59 m.)
Deck Material	White Oak 2" Nominal	White Oak 2" Nominal	White Oak 2" Nominal
Ramps	24" x 72" Upright Self-Cleaning with Spring Assist	24" x 72" Upright Self-Cleaning with Spring Assist	24" x 72" Upright Self-Cleaning with Spring Assist
King Pin Setback/ Height	18" (45.72 cm.) / 48" (121 cm.)	18" (45.72 cm.) / 48" (121 cm.)	18" (45.72 cm.) / 48" (121 cm.)
Swing Clearance	84" (213 cm.)	84" (213 cm.)	84" (213 cm.)
Main Frame	Engineered, Cambered, Fabricated Main Beams	Engineered, Cambered, Fabricated Main Beams	Engineered, Cambered, Fabricated Main Beams
Crossmembers	Pierced 6" Jr. I-Beam on 16" Centers	Pierced 6" Jr. I-Beam on 16" Centers	Pierced 6" Jr. I-Beam on 16" Centers
Jack	200,000 lb. Twin 2 - Speed Holland Mark V	200,000 lb. Twin 2 - Speed Holland Mark V	200,000 lb. Twin 2 - Speed Holland Mark V
Tie Downs	(14) Bent D-Rings	(14) Bent D-Rings	(14) Bent D-Rings
Axle Capacity	(2) 25K Meritor Oil Bath	(3) 25K Meritor Oil Bath	(3) 25K Meritor Oil Bath
Suspension	49" Spread, 9700 Hutch	49" Spread, 9700 Hutch	49" Spread, 9700 Hutch
Brakes	Air, ABS 2S/1M	Air, ABS 2S/1M	Air, ABS 2S/1M
Tires/Wheels	L - (8) 235/75R 17.5 H, 8 Bolt Hub Pilot H - (8) 255/70R 22.5 H, 10 Bolt Hub Pilot	L - (12) 235/75R 17.5 H, 8 Bolt Hub Pilot H - (12) 255/70R 22.5 H, 10 Bolt Hub Pilot	L - (12) 235/75R 17.5 H, 8 Bolt Hub Pilot H - (12) 255/70R 22.5 H, 10 Bolt Hub Pilot
Electrical DOT/SAE Approved	LED Sealed Beam Lights, Sealed Wiring Harness, Mid Turn Lights	LED Sealed Beam Lights, Sealed Wiring Harness, Mid Turn Lights	LED Sealed Beam Lights, Sealed Wiring Harness, Mid Turn Lights
Paint - 3 Year Warranty	Completed trailer is fully grit-blasted for superior paint adhesion, primed with 2-coats of a rust prohibitive primer, and then painted with 3-coats of high gloss urethane topcoat, electrostatically applied.		

STANDARD FEATURES:

- Narrow Neck Design - 84" Swing Clearance
- 48" King Pin Height
- 10" Structural Channel Side Rails
- Pierced 6" I-Beam Crossmembers on 16" Centers
- Open Wheel Wells
- 3' Self Cleaning Angle Iron Beavertail



Measurements are approximate • Some models may be shown with optional equipment • All specifications are subject to change.

NN TT SERIES

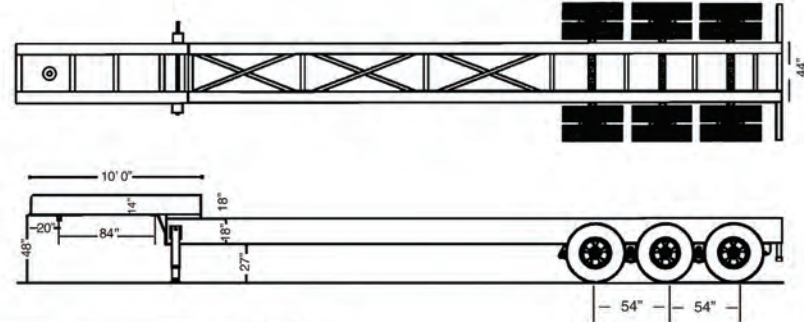
STANDARD FEATURES:

- Built Per Customer's Specs
- 48" King Pin Height
- H-Frame Gooseneck
- Mud Flap Brackets with Mud Flaps
- 9700 Hutch Suspension

Tender Frame Narrow Neck (NN)

Whatever your cargo may be, a tender box or a tank, each of these models are built to your specifications.

WE BUILD IT YOUR WAY.



Model Shown - FT-80-3 NN TT



FT-50-2 NN TT - 27' Overall
Shown with Optional Tread Plate Top Deck and Aluminum Wheel Fenders



FT-70-2 NN-HX - 43' Overall
Shown with Optional Viper Red Paint

Model	FT-50-2 NN-TT	FT-70-2 NN-TT	FT-75-2 NN-TT	FT-75-2 NN-TT	FT-75-2 NN-TT
GVWR	57,500 lbs. (26,081 kg.)	80,000 lbs. (36,287 kg.)	86,000 lbs. (39,008 kg.)	92,000 lbs. (41,730 kg.)	113,000 lbs. (51,225 kg.)
Approx. Weight (Empty)	7,500 lbs. (3,401 kg.)	10,000 lbs. (4,535 kg.)	11,000 lbs. (4,989 kg.)	12,000 lbs. (5,443 kg.)	13,000 lbs. (5,896 kg.)
Load Capacity (Dist.)	50,000 lbs. (22,679 kg.)	70,000 lbs. (31,751 kg.)	75,000 lbs. (34,019 kg.)	80,000 lbs. (36,287 kg.)	100,000 lbs. (45,359 kg.)
Deck Length (Main Deck)	23' (7.01 m.) 33' Overall (10.05 m.)	28' (8.53 m.) 38' Overall (11.58 m.)	28' (8.53 m.) 38' Overall (11.58 m.)	32' (9.75 m.) 42' Overall (12.80 m.)	38' Overall (11.58 m.)
Deck Width	96" OD 44" OD	96" OD 44" OD	96" OD 44" OD	96" OD 44" OD	102" (2.59 m.)
Upper Deck	90° 10' Deck (3.04 m.)	90° 10' Deck (3.04 m.)	90° 10' Deck (3.04 m.)	90° 10' Deck (3.04 m.)	90° 10' Deck (3.04 m.)
King Pin Setback	18" (45.72 cm.)	18" (45.72 cm.)	18" (45.72 cm.)	18" (45.72 cm.)	18" (45.72 cm.)
Jack	200,000 lb. Twin 2 - Speed Holland Mark V	200,000 lb. Twin 2 - Speed Holland Mark V	200,000 lb. Twin 2 - Speed Holland Mark V	200,000 lb. Twin 2 - Speed Holland Mark V	200,000 lb. Twin 2 - Speed Holland Mark V
Axle Capacity	(2) 25K Meritor Oil Bath	(2) 25K Meritor Oil Bath	(2) 25K Meritor Oil Bath	(3) 25K Meritor Oil Bath	(3) 25K Meritor Oil Bath
Suspension	49" Spread, 9700 Hutch	49" Spread, 9700 Hutch	49" Spread, 9700 Hutch	54.5" Spread, 9700 Hutch	49" Spread, 9700 Hutch
Brakes	Air, ABS 2S/1M	Air, ABS 2S/1M	Air, ABS 2S/1M	Air, ABS 2S/1M	Air, ABS 2S/1M
Tires/Wheels	(8) 215/75R 17.5 H, 8 Bolt Hub Pilot	(8) 235/75R 17.5 H, 8 Bolt Hub Pilot	(8) 11R22.5 G, 10 Bolt Hub Pilot	(12) 11R22.5 G, 10 Bolt Hub Pilot	(12) 11R22.5 G, 10 Bolt Hub Pilot
Electrical DOT/SAE Approved	LED Sealed Beam Lights, Sealed Wiring Harness, Mid Turn Lights	LED Sealed Beam Lights, Sealed Wiring Harness, Mid Turn Lights	LED Sealed Beam Lights, Sealed Wiring Harness, Mid Turn Lights	LED Sealed Beam Lights, Sealed Wiring Harness, Mid Turn Lights	LED Sealed Beam Lights, Sealed Wiring Harness, Mid Turn Lights
Paint - 3 Year Warranty	Completed trailer is fully grit-blasted for superior paint adhesion, primed with 2-coats of a rust prohibitive primer, and then painted with 3-coats of high gloss urethane topcoat, electrostatically applied.				

Measurements are approximate • Some models may be shown with optional equipment • All specifications are subject to change.



WE BUILD IT *YOUR WAY.*



X-FORCE Hydraulic Detachable Gooseneck "The Industry's Most User-Friendly Detach"

Payload capacities ranging from 70,000 lbs. to 120,000 lbs. For detailed information, please see the X-Force brochure XF-100.



XF-110-3 HDG



TSA - Tilt Slide Axle

Payload capacities ranging from 70,000 lbs. to 100,000 lbs. For detailed information, please see the TSA brochure TSA-100.



FT-80-3 TSA

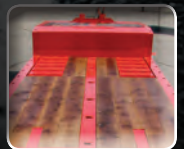


Perimeter Frame - Hydraulic Tail

Payload capacities ranging from 70,000 lbs. to 100,000 lbs. For detailed information, please see the Perimeter Frame Hydraulic Tail brochure HT-101.



FT-70-2 PL-HT



FEATURES & OPTIONS

CUSTOMIZATION: *Definition* - To modify or build to individual or personal specifications or preference.

Felling Trailers believe that *"It's All In The Details"* when it comes to building a trailer. We build trailers to accommodate *your* equipment and to suit *your* needs, right down to the last detail. The features and options are limitless...contact Felling Trailers to design the trailer that is right for you.

UPPER DECK OPTIONS



20° Paver Neck 9' Deck
(9' + 6' Slope = 15')



30° Paver Neck 9' Deck
(9' + 4' Slope = 13')



45° Paver Neck 9' Deck
(9' + 2.5' Slope = 11.5')

RAMP OPTIONS



Split Full Width Wood Inlaid Air Ramps & Wood Inlaid Beavertail



24" x 72" Spring Assist Self Cleaning Stand Up Ramps



38" x 72" Air Ramp Self Cleaning Upright Ramps with Top Flip-over



11' Hydraulic Bi-Fold Paver Ramps



Full Width Wood Inlaid Hydraulic Bi-Fold Ramp



6' x 36" Air Ramp Self Cleaning Angle Upright Ramps



LOAD SECUREMENT OPTIONS

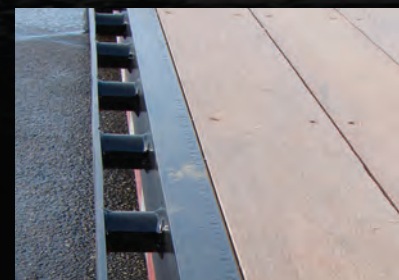
Recessed D-Ring



Swivel D-Ring



Pipe Spools



WE BUILD IT *YOUR WAY.*



48" Removable Bulkhead with Mesh Windows



48" Weld-on Solid Bulkhead



Over Width Pull-out Lights



Digital Air Scale - Air Weigh Brand



72" Axle Spread with Aluminum Wheels



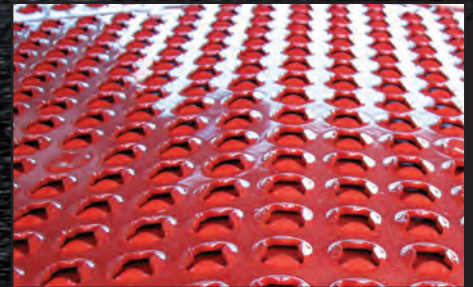
Oil Field Style Beavertail w/ Open Pocket, Steel Covered w/ grouser bars



Apitong/Angelim Pedra Decking



Floor Plate Decking with Open Frame Center



Star Plate (Traction Aid) Decking



Pick-up Eye



Chain Slots



Rub Rail w/Stake Pockets, Pipe Spools, C-Hooks and Pipe Holders

Swing-out Outriggers

C-Track for Sliding 4" Winch w/ Flat Bar on Opposite Side

3 Bar Weld-on Winch

J-Hooks



The **FELLING** Style

Quality - Craftsmanship - Pride

FELLING Trailers, Inc. has grown from a small shop in 1974 to a factory and office complex that today covers over 132,000 square feet. **FELLING** Trailers currently manufactures over 3,000 trailers a year and its standard trailer line includes over 220 models. **FELLING** Trailers' current capabilities allows them to provide a high quality product that is distributed across North America and internationally. We hold a strong commitment to quality craftsmanship and customer satisfaction. We put our reputation on the line with every **FELLING** Trailer that is manufactured and we stand behind each trailer with our 5-year structural warranty and a 3-year paint warranty. That's our style and that's why so many people throughout North America and internationally have made the **FELLING** Style their own.



To learn more about us, have us mail you a specific full color brochure, or locate our nearest Felling Dealer, go to www.felling.com or give us a call at 1-800-245-2809.



Your **FELLING TRAILERS** Dealer:

FELLING

TRAILERS

Manufactured & Distributed by: **Felling Trailers, Inc.**
 1525 Main St. S. • Sauk Centre, MN 56378
 (320) 352-5239 • (320) 352-5230 FAX

Visit us online at www.felling.com

E-mail us at: trailers@felling.com

Call 1-800-245-2809 for your nearest dealer.