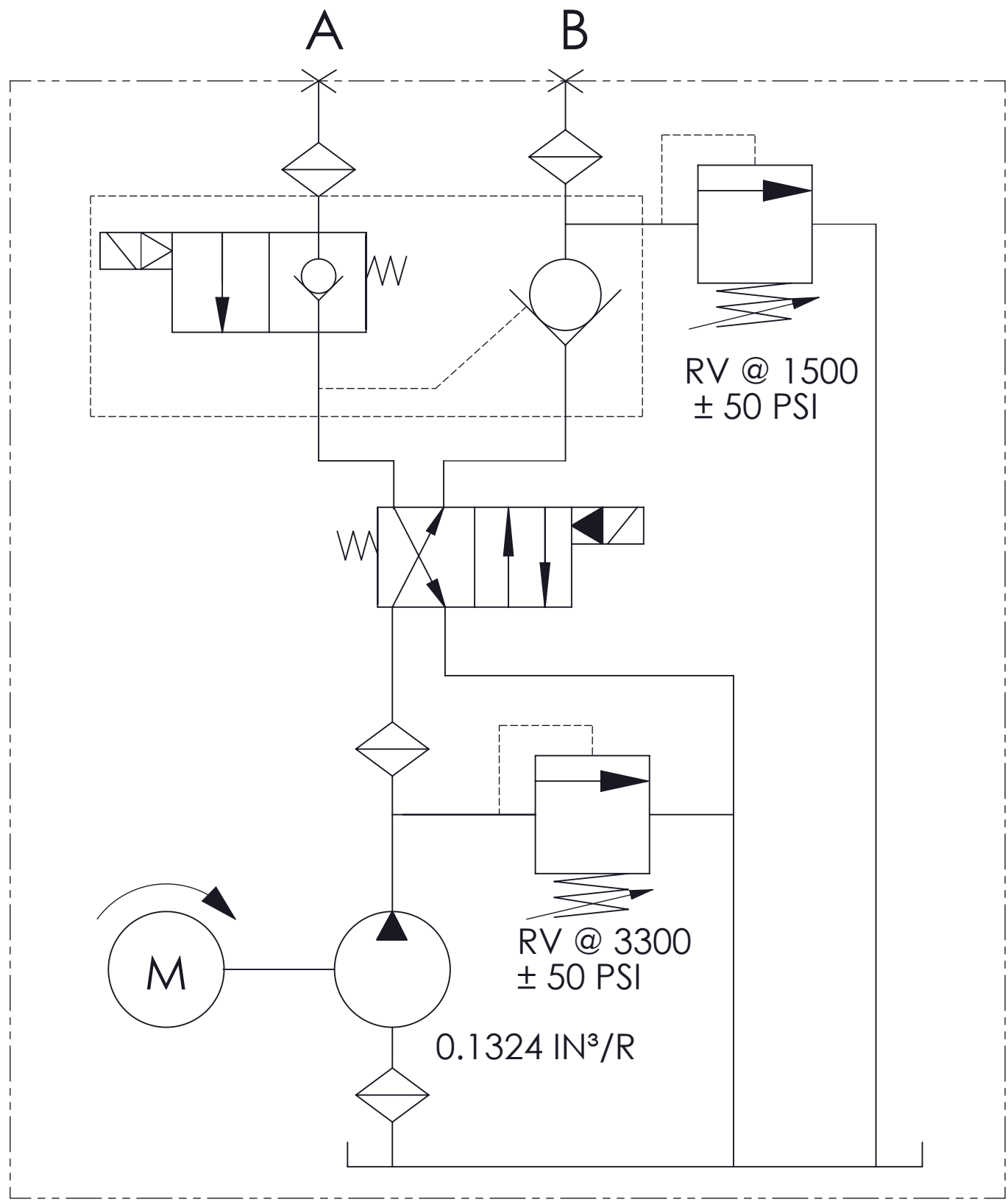
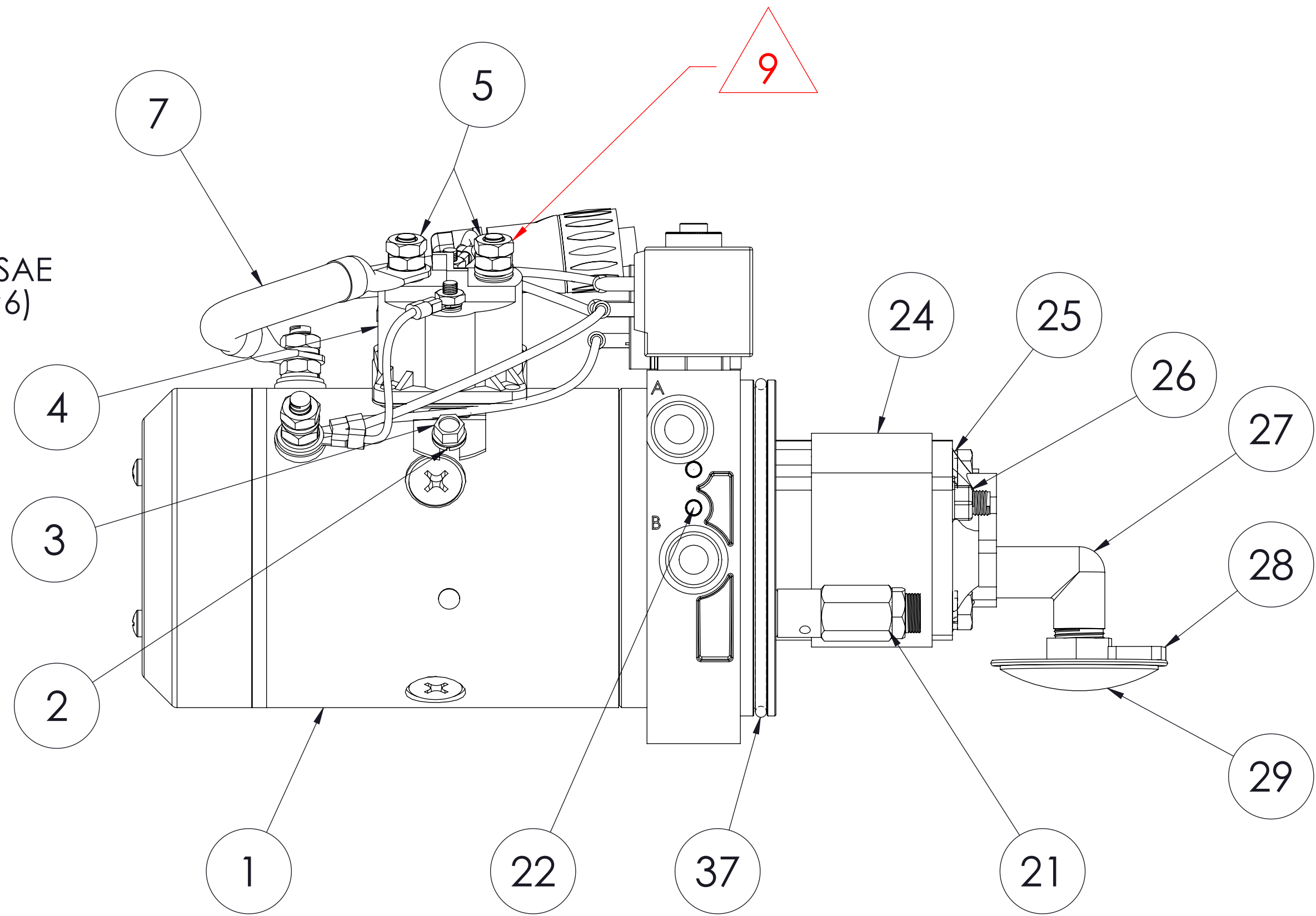
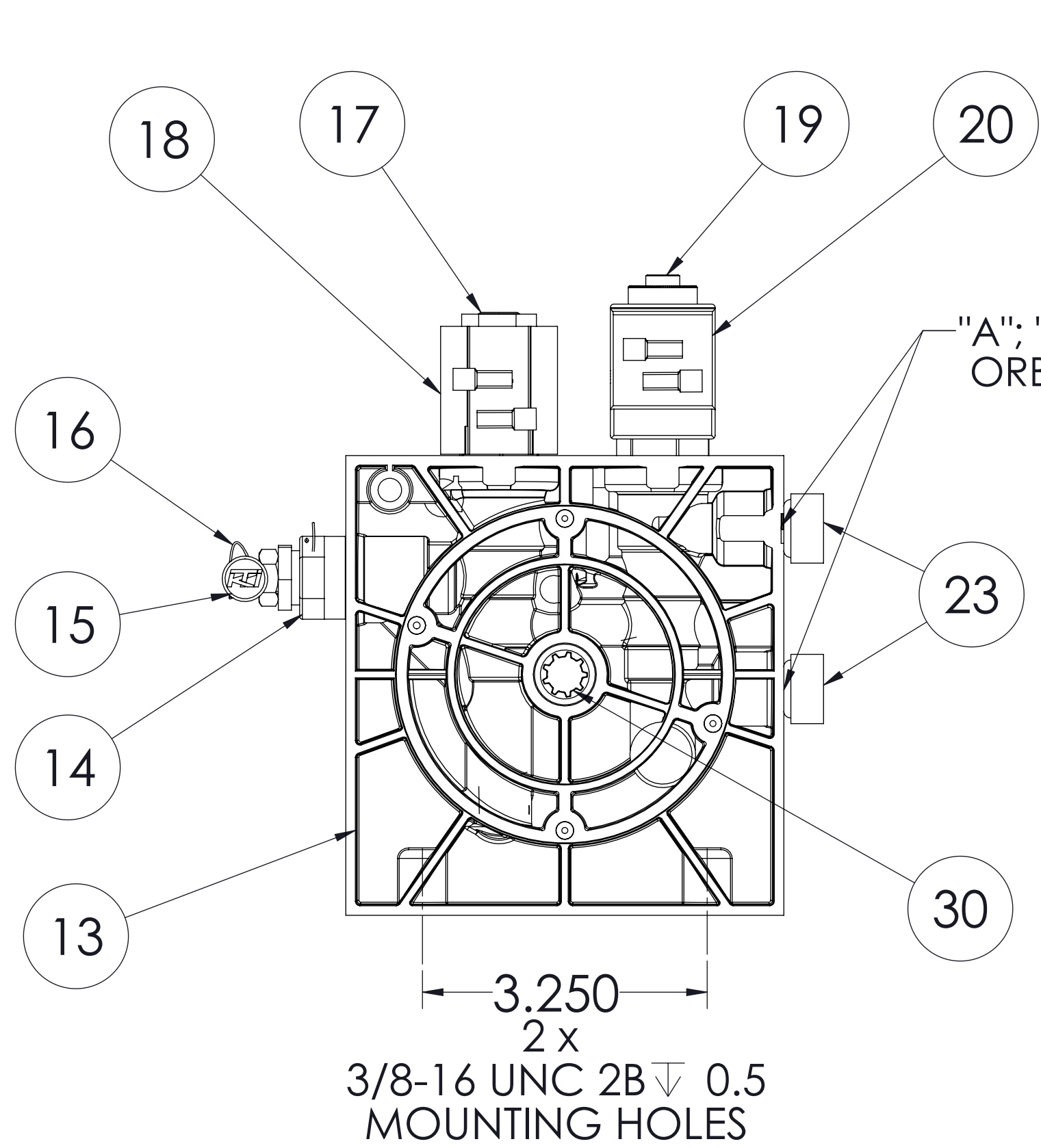
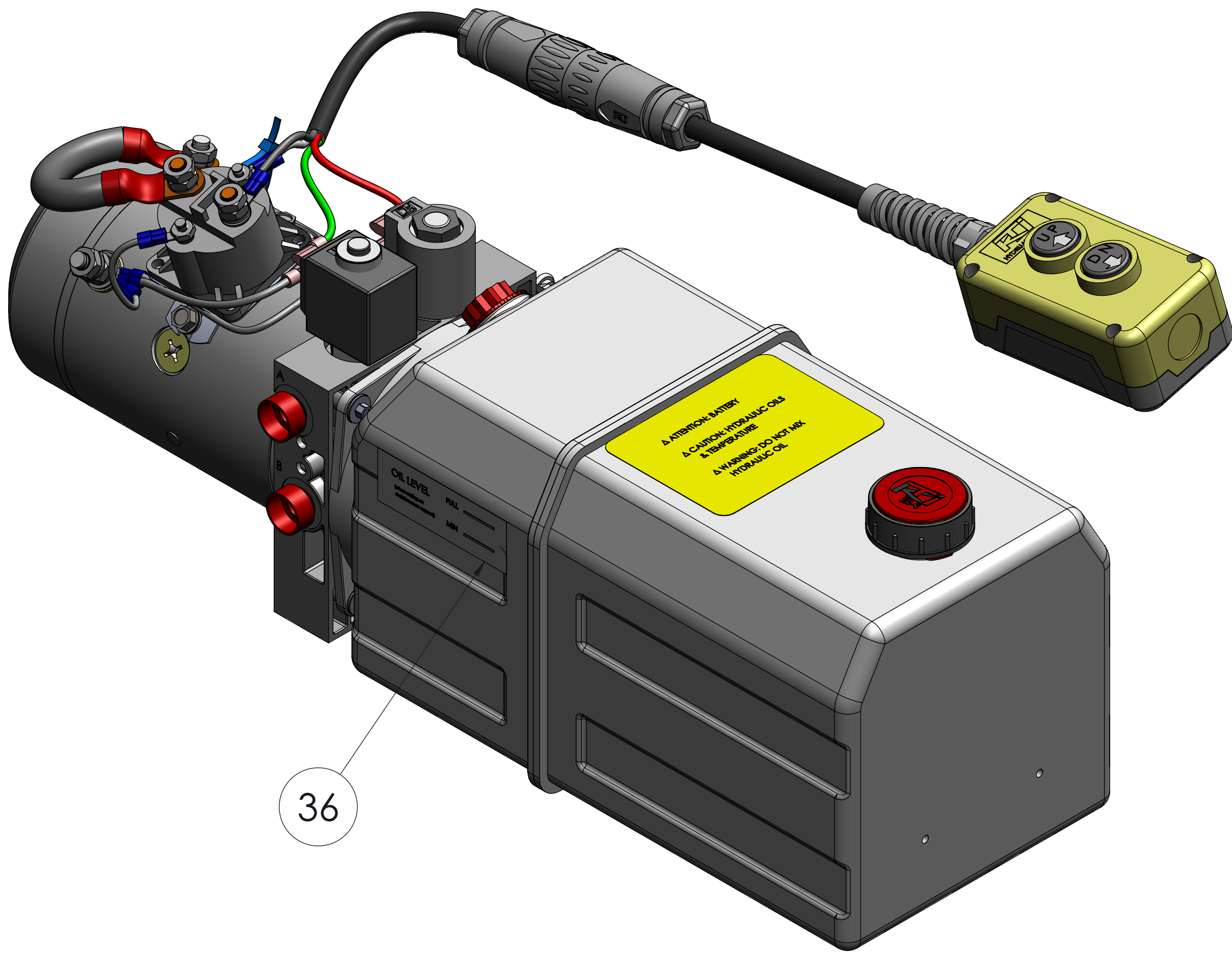
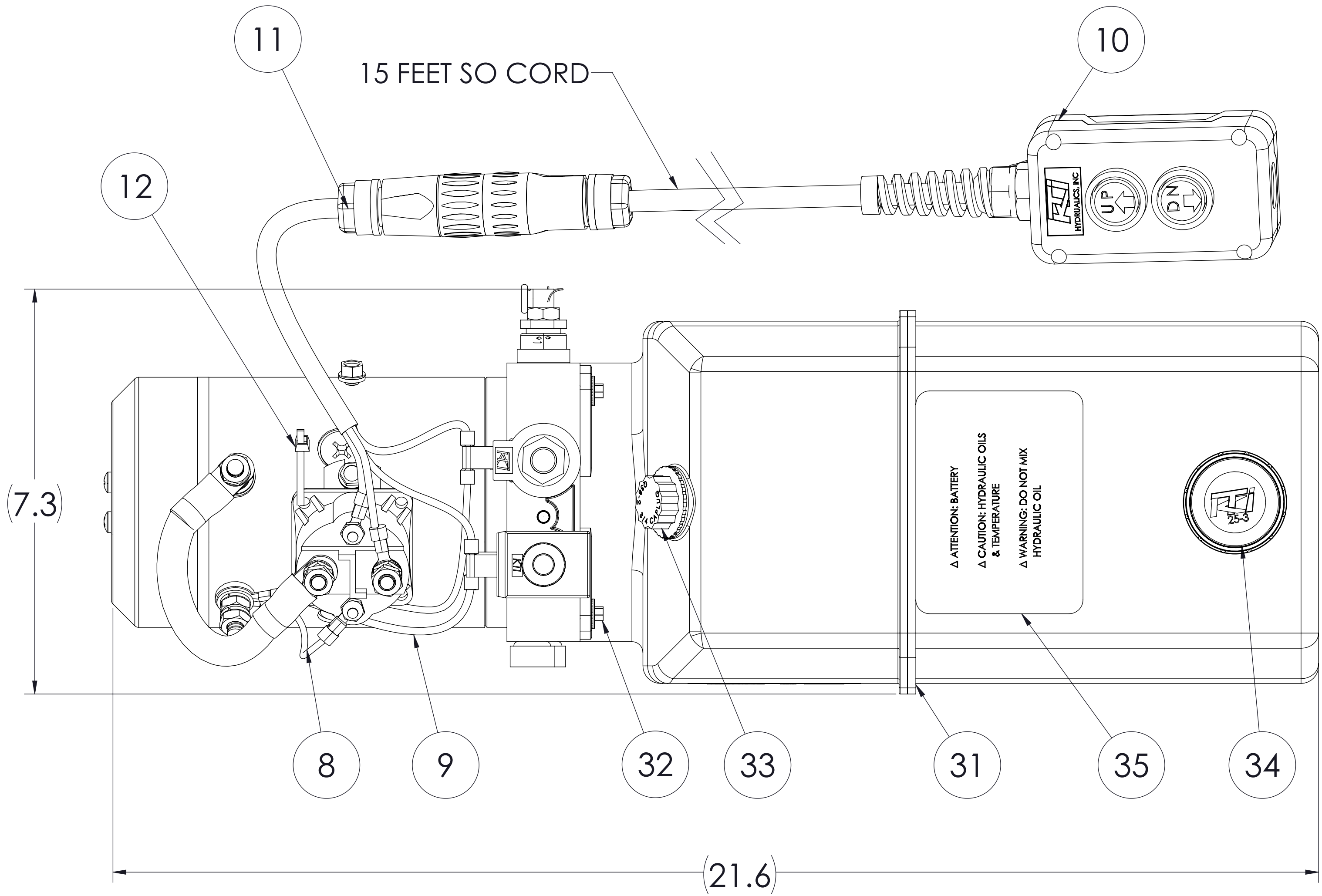
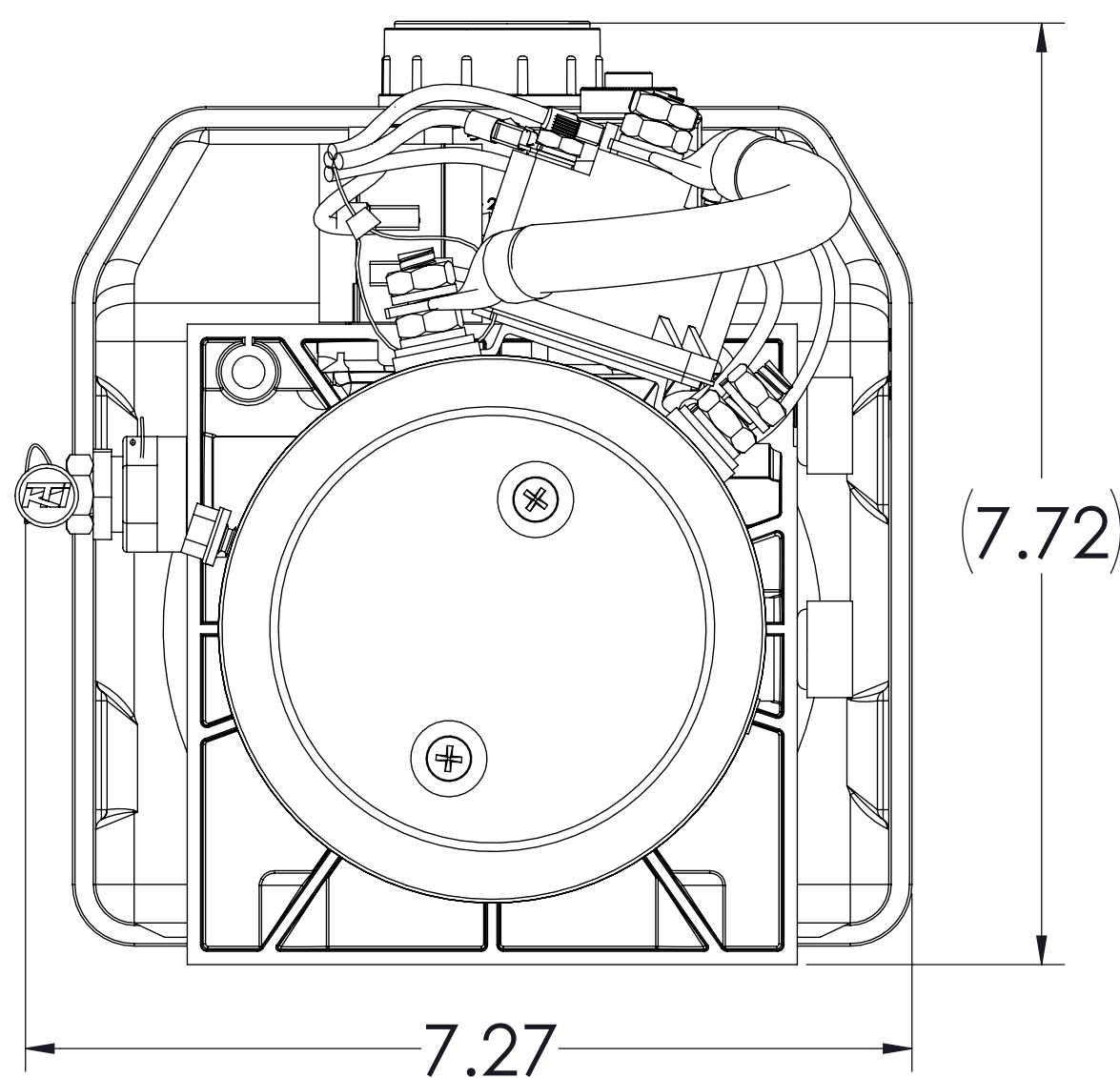


REVISIONS				
REV	ECR	DESCRIPTION	DATE	APPROVED
A		UPDATE DRAWING ACCORDING TO CURRENT PRODUCTION		



Circuit 111



ITEM NO.	PART NUMBER	DESCRIPTION	QTY.
1	1245-18	12V DC, (2) TERMINAL, ELECTRIC MOTOR	1
2	Q14-025	1/4" STEEL SPLIT LOCK WASHER	2
3	Q19-025-0038-23	1/4-20 X 3/8" STEEL HEX FLANGE HEAD SELF TAPPING SCREW	2
4	391-2	12V DC HEAVY DUTY PLASTIC START SOLENOID SWITCH /100 amp	1
5	Q21-031	5/16-24 UNF HEX NUT	2
6	31-5	WARNING LABEL TAG, YELLOW, TORQUE SPEC (NOT SHOWN)	1
7	27-1	TERMINAL WIRE (SOLENOID POWER TERMINAL TO MOTOR TERMINAL)	1
8	27-16	GROUND WIRE (MOTOR TERMINAL TO SOLENOID RELAY TERMNIAL)	1
9	27-33	GROUND WIRE (MOTOR TERMINAL TO 2 COILS)	1
10	395-22	2 BUTTON 4 WIRE REMOTE PENDANT W/CYLINDRICAL QUICK DISCONNECT 15' CORD	1
11	64-11	TOWER HALF SHROUD CONNECTOR ASSY WITH 8" CORD & 4 WIRE	1
12	Q37-2	NYLON BLACK CABLE TIE 8"	1
13	3920-108..	MACHINED COMPLETE CIRCUIT 108 MANIFOLD	1
14	LRV-080	CARTRIDGE RELIEF VALVE, ADJUSTABLE SET @ 3300 PSI	1
15	63-1	KTI WARRANTY LEAD SEAL	1
16	63-2	WIRE FOR RELIEF VALVE	1
17	LSV2-08-4CO	4W2P SPOOL TYPE CARTRIDGE SOLENOID VALVE	1
18	LC2-08-C-5B	10V DC #8 CYLINDRICAL COIL W/ DUAL SPADE	1
19	LSPC-080-4-00	NC 2 WAY AND P.O.C IN 4 WAY CARTRIDGE VALVE	1
20	LC-08-S-5B	10V DC #8 SQUARE COIL W/ DUAL SPADE	1
21	RVSAE6-30	SECONDARY RELIEF VALVE W/SIDE EXHAUST PORTS SET @ 1500 PSI	1
22	SX-6	EXPANDER SEALING PLUG, 6mm ZINC PLATED	4
23	Q5-6	SAE #6 (9/16-18) PLASTIC SHIPPING PLUG	2
24	PL-2.10	PRESSURE LOADED GEAR PUMP (0.1324 IN³/R)	1
25	Q14-031	5/16" STEEL SPLIT LOCK WASHER	2
26	Q16-031-0325	5/16-24 x 3.25" HEX HEAD CAP SCREW, GRADE 5	2
27	21-1	3/8" NPT 90 DEGREE ALUMINUM DIE-CAST INLET ELBOW	1
28	23-1	RECTANGLE CARBON MAGNET	1
29	57-6	3/8" NPT INLET STRAINER, 120 MESH, PLEATED	1
30	52-23	FEMALE SPLINE 9 TOOTH - TO FEMALE SLOT COUPLING	1
31	8181-6	6 QUART PLASTIC OFFSET RESERVOIR	1
32	Q95-025-0050	1/4-20 x 0.50", 6mm HEX FLANGE LOCKING CAP SCREW	4
33	19-1	KTI 3/4 NPT PLASTIC THREADED PLUG W/ "O" RING	1
34	25-3	KTI 3/4 NPT 40 MICRON AIR BREATHER	1
35	31-9	WARNING LABEL, BATTERY & OIL TEMP	1
36	31-2	OIL LEVEL LABEL	1
37	Q2-4113	O-RING, I.D. 113mm, C/S 4mm. METRIC BUNA, RESERVOIR	1

GENERAL INSTRUCTIONS:

1. TORQUE PUMP MOUNTING CAP SCREWS TO 20 FT/LB.
2. TORQUE MOTOR MOUNTING CAP SCREWS TO 8 F/LB.
3. TORQUE LRV-080, LSV2-08-4CO AND LSPC-080-4-00 TO 18 FT/LB MAX.
4. SET LRV-080 TO @3300 PSI, SET RVSAE6 @1500 PSI.
5. TORQUE COILS LC2-08-C-5B AND LC-08-S-5B FINGER TIGHT.
6. TORQUE STUDS ON START SOLENOID 391-2 TO 42 IN/LB MAX.
7. 391-2 & 395-22 WIRED COMPLETED.
8. TEST COMPLETE PER TS/DC 4309.
9. INSTALL ITEM #6(WARNING LABEL TAG) AT SOLENOID POST AFTER TEST COMPLETED.

PROPRIETARY AND CONFIDENTIAL
THE INFORMATION CONTAINED IN THIS
DRAWING IS THE SOLE PROPERTY OF
KTI HYDRAULICS INC.. ANY
REPRODUCTION IN PART OR AS A WHOLE
WITHOUT THE WRITTEN PERMISSION OF
KTI HYDRAULICS INC. IS
PROHIBITED.

UNLESS OTHERWISE SPECIFIED:		NAME	DATE
UNLESS OTHERWISE SPECIFIED DIMENSIONS ARE IN INCHES TOLERANCES ARE: FRACTIONS DECIMALS ANGLES XXX ± .005 ± 1° XX ± .01		DRAWN BY: K.LAI	10/24/13
INTERPRET GEOMETRIC TOLERANCING PER: MATERIAL		CHECKED	
FINISH		ENG APPR.	
NEXT ASSY		MFG APPR.	
USED ON		Q.A.	
APPLICATION		COMMENTS:	
CIRCUIT 111		FELLING TRAILERS	
		TITLE:	KTI 12V DC POWER UNIT (HORIZONTAL MOUNTING)
		SIZE	DWG. NO.
		E	DC 4309
		SCALE:	WEIGHT:
			SHEET 1 OF 1
		REV	A

